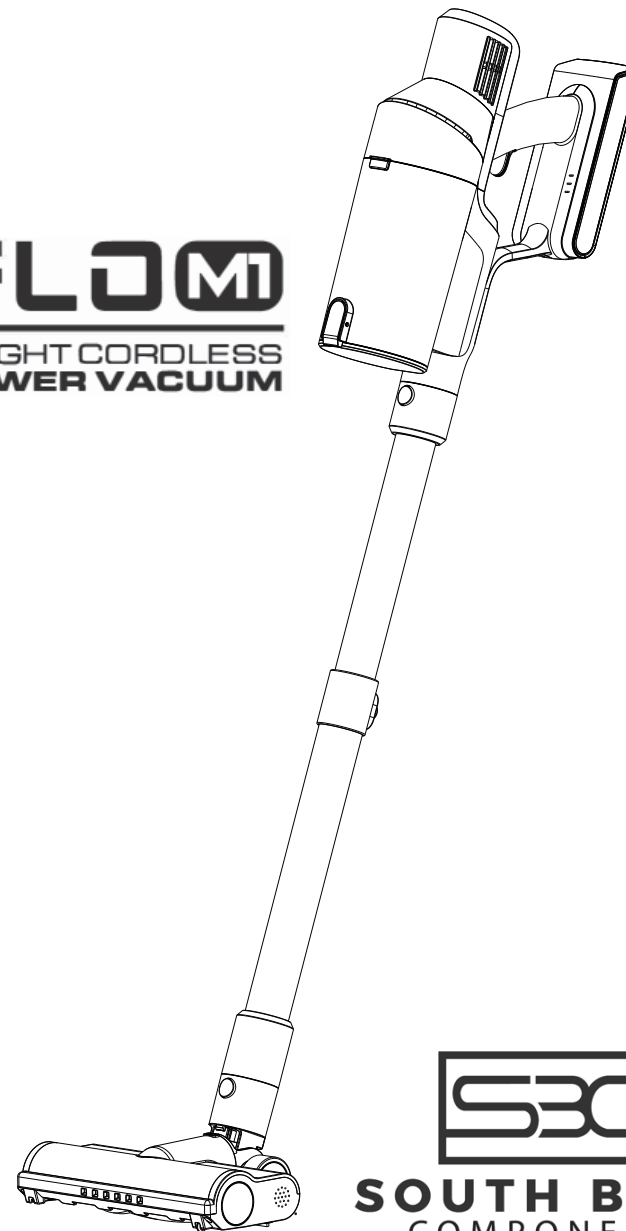


**V-FLO M1**  
LIGHTWEIGHT CORDLESS  
HIGH-POWER VACUUM



**V-FLO M1**  
LIGHTWEIGHT CORDLESS  
HIGH-POWER VACUUM



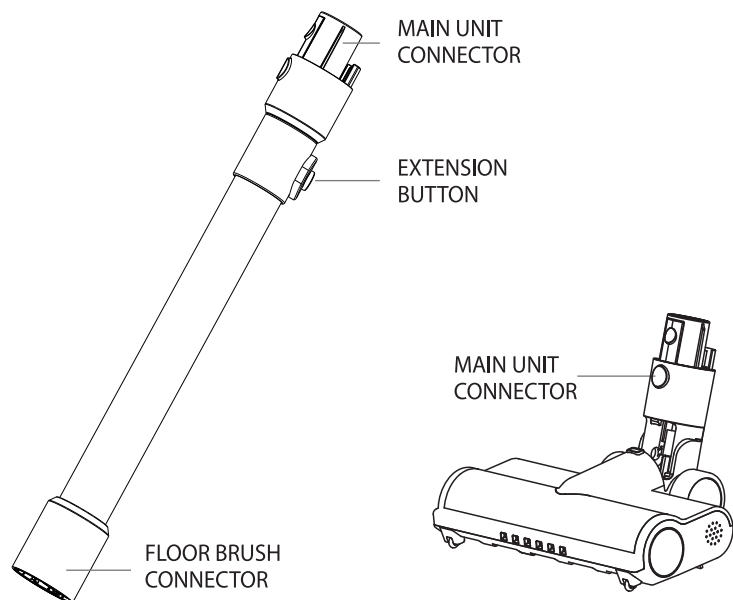
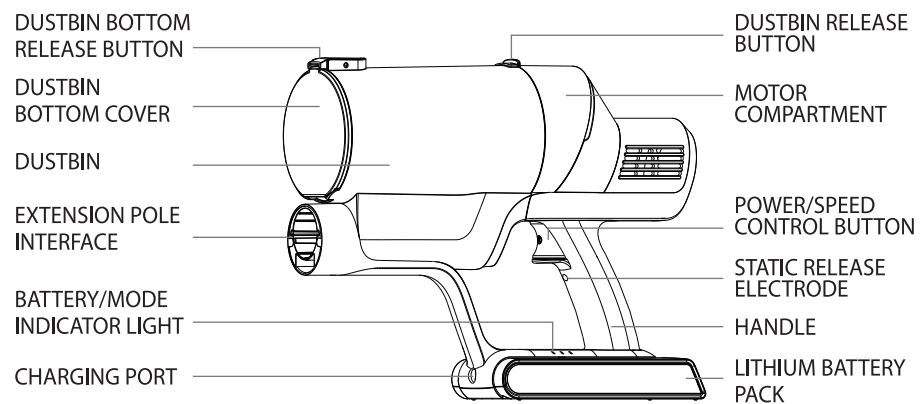
**SBC**  
**SOUTH BEND**  
COMPONENTS

CONTENTS	2
SAFETY PRECAUTIONS	3
PRODUCT COMPONENTS	4
PRECAUTIONS BEFORE USE	6
USAGE INSTRUCTIONS	8
CLEANING AND MAINTENANCE	10
TECHNICAL SPECIFICATIONS	12
TROUBLESHOOTING AND ANALYSIS	13

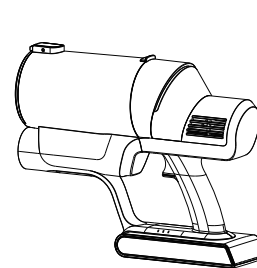
## BEFORE USING THIS CORDLESS VACUUM CLEANER, PLEASE CAREFULLY READ THE FOLLOWING USER GUIDE

- 1\BEFORE USING THIS VACUUM CLEANER, YOU MUST CAREFULLY INSPECT ALL THE INSTRUCTIONS PROVIDED BELOW.
- 2\WHEN OPERATING THE CORDLESS VACUUM CLEANER, FOLLOW THE OPERATIONAL INSTRUCTIONS OUTLINED BELOW.
- 3\USE THE CORDLESS VACUUM CLEANER IN AN APPROPRIATE ENVIRONMENT.
- 4\THIS DEVICE IS NOT SUITABLE FOR USE BY INDIVIDUALS (INCLUDING CHILDREN) WITH PHYSICAL, SENSORY, OR MENTAL DISABILITIES, OR LACK OF EXPERIENCE AND KNOWLEDGE, UNLESS SUPERVISED BY A PERSON RESPONSIBLE FOR THEIR SAFETY.
- 5\IF THE VACUUM CLEANER OR CHARGER IS DAMAGED, RETURN IT TO AN AUTHORIZED SERVICE CENTER FOR REPAIR OR REPLACEMENT TO AVOID INJURY.
- 6\CHILDREN UNDER 8 YEARS OF AGE ARE NOT ALLOWED TO USE THIS VACUUM CLEANER.
- 7\CHILDREN AGED 8 AND ABOVE MAY ONLY USE THIS VACUUM CLEANER UNDER ADULT SUPERVISION.
- 8\THIS VACUUM CLEANER IS NOT A TOY. EXERCISE SPECIAL CAUTION WHEN USED AROUND CHILDREN, PETS, AND PLANTS.
- 9\TO AVOID INJURY OR ELECTRIC SHOCK, DO NOT ATTEMPT TO REPAIR THE CORDLESS VACUUM CLEANER YOURSELF.
- 10\WHEN CHARGING, CONNECT THE CHARGER TO THE POWER OUTLET FIRST, THEN TO THE VACUUM CLEANER.
- 11\ENSURE THAT HAIR, CLOTHING, AND ANY BODY PARTS ARE KEPT AWAY FROM THE BRUSH OR VACUUM CLEANER SWITCH.
- 12\DO NOT USE THIS VACUUM CLEANER ON FLAMMABLE ASH, SUCH AS CIGARETTE BUTTS, OR FLAMMABLE LIQUIDS, SUCH AS GASOLINE.
- 13\EXERCISE CAUTION WHEN USING THE VACUUM CLEANER ON STAIRS.
- 14\DO NOT USE THE PRODUCT IF THE FILTER IS NOT PROPERLY INSTALLED ON THE DEVICE.
- 15\THIS CORDLESS VACUUM CLEANER IS SPECIFICALLY DESIGNED FOR HOUSEHOLD CLEANING PURPOSES ACCORDING TO THIS USER MANUAL.
- 16\IF YOU DO NOT PLAN TO USE THE VACUUM CLEANER FOR AN EXTENDED PERIOD, DO NOT LEAVE IT IN A CHARGING STATE.
- 17\TO AVOID ELECTRIC SHOCK, DO NOT IMMERSE THE VACUUM CLEANER ACCESSORIES IN LIQUIDS.
- 18\USE ORIGINAL EQUIPMENT AND ACCESSORIES. THE USE OF OTHER TYPES OF BATTERIES MAY CAUSE EXPLOSIONS AND RESULT IN INJURIES TO USERS.
- 19\CHARGE THE VACUUM CLEANER BATTERY ACCORDING TO THE CORRECT RATED VOLTAGE SPECIFIED IN THE PRODUCT SPECIFICATIONS.
- 20\STORE THE VACUUM CLEANER IN A COOL, DRY PLACE.
- 21\REGULARLY MAINTAIN THE VACUUM CLEANER AND CLEAN THE DUSTBIN TO ENSURE PROPER OPERATION.
- 22\PLEASE RETURN DAMAGED OR MALFUNCTIONING EQUIPMENT TO THE SERVICE CENTER.
- 23\AVOID CHARGING THE BATTERY BEYOND THE SPECIFIED TEMPERATURE RANGE. USING THE WRONG PLUG OR CHARGING THE BATTERY AT THE WRONG TEMPERATURE MAY DAMAGE IT AND INCREASE THE RISK OF FIRE. FOR OPTIMAL BATTERY USAGE: STORE THE VACUUM CLEANER IN A ROOM TEMPERATURE ENVIRONMENT BETWEEN APPROXIMATELY 18 DEGREES CELSIUS (64°F) TO 28 DEGREES CELSIUS (82°F) WHEN NOT IN USE. THE RECOMMENDED CHARGING TEMPERATURE IS BETWEEN 10 DEGREES CELSIUS (50°F) TO 30 DEGREES CELSIUS (86°F).

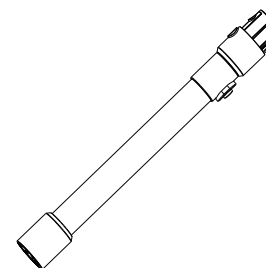
## PRODUCT COMPONENTS



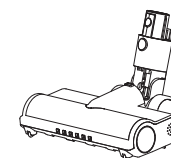
## PRODUCT COMPONENTS



MAIN UNIT



CONDUCTIVE TUBE



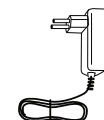
MOTORIZED FLOOR BRUSH



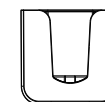
2-1 BRUSH



CREVICE NOZZLE



CHARGING



WALL MOUNT

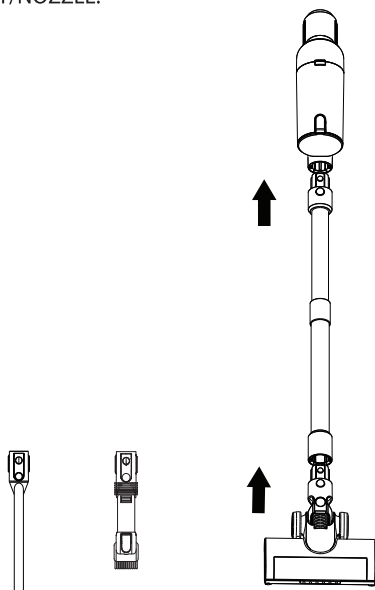


BLADE SCRAPER

## PRECAUTIONS BEFORE USE

### HOW TO ASSEMBLE:

AS SHOWN IN THE DIAGRAM, ALIGN THE MAIN UNIT, CONDUCTIVE TUBE, AND ACCESSORIES, THEN PUSH THEM IN UNTIL YOU HEAR A "CLICK" SOUND.  
IF YOU NEED TO REMOVE ACCESSORIES OR NOZZLES, PRESS THE BUTTON AND PULL OUT THE ACCESSORY/NOZZLE.



NOTE: ALL ACCESSORIES ARE COMPATIBLE FOR CONNECTING TO THE MAIN UNIT OR CONDUCTIVE TUBE.

### WALL MOUNT:

PLACE THE OUTPUT PLUG OF THE CHARGER INTO THE HOLES ON THE WALL MOUNT, AND ARRANGE THE CORD ALONG THE DESIGNATED TRACK (SEE FIGURE 1).  
SECURELY FASTEN THE WALL BASE IN A COOL, DRY PLACE (SEE FIGURE 2).

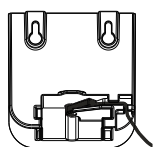


FIGURE 1

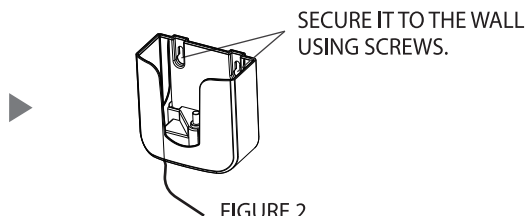


FIGURE 2

## PRECAUTIONS BEFORE USE

### HOW TO CHARGE:

YOU CAN CHARGE THE VACUUM CLEANER USING EITHER CHARGING METHOD DEPICTED IN FIGURE 1 OR FIGURE 2. WHEN THE BATTERY INDICATOR LIGHT IS FLASHING, IT INDICATES THAT THE CHARGER IS CURRENTLY CHARGING.

THE APPROXIMATE CHARGING TIME FROM LOW BATTERY TO FULL IS AROUND 3.5 TO 5 HOURS.

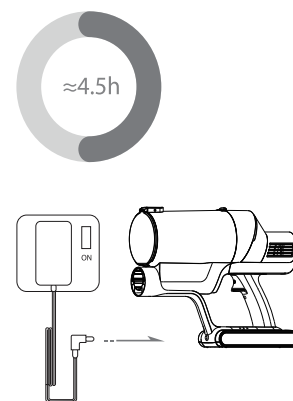


FIGURE 1

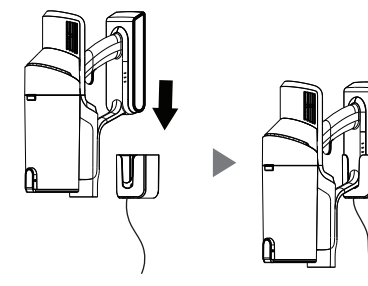


FIGURE 2

### WARNING!

DO NOT PLACE THE CORDLESS VACUUM CLEANER IN AN UPRIGHT POSITION ON ANY SURFACE (SUCH AS A WALL, TABLE EDGE, CABINET, ETC.) TO PREVENT THE VACUUM CLEANER FROM ACCIDENTALLY SLIPPING AND CAUSING DAMAGE TO THE MACHINE.

NOTE: IF YOU PLAN NOT TO USE THE VACUUM CLEANER FOR TWO MONTHS OR MORE, PLEASE FULLY CHARGE IT AND REMOVE THE CHARGER FOR STORAGE IN A COOL, DRY PLACE.



## HOW TO TURN ON THE VACUUM CLEANER.:

- 1\PRESS THE POWER/SPEED CONTROL BUTTON TO START THE VACUUM CLEANER. THE MACHINE OPERATES IN STANDARD MODE.
- 2\PRESS THE POWER/SPEED CONTROL BUTTON AGAIN TO SWITCH THE MACHINE TO TURBO MODE.
- 3\PRESS THE POWER/SPEED CONTROL BUTTON ONCE MORE TO TURN OFF THE VACUUM CLEANER.



## HOW TO USE THE VACUUM CLEANER.:

- 1\THE MOTORIZED FLOOR BRUSH IS SUITABLE FOR HARD FLOORS AND SHORT-PILE CARPETS.
- 2\THE BOTTOM OF THE MOTORIZED BRUSH IS EQUIPPED WITH A DUST SCRAPING BLADE (AS SHOWN IN FIGURE 1) TO ENSURE EFFECTIVE DUST SUCTION. DO NOT MOVE THE MOTORIZED BRUSH BACKWARD OVER THE DUST YOU INTEND TO CLEAR.
- 3\MOVE FORWARD TO PICK UP DUST, PULL BACKWARD ALONG THE CLEANED PATH, GENTLY ROTATE, AND PUSH FORWARD TO CONTINUE PICKING UP DUST IN A STEP-BY-STEP MANNER (AS SHOWN IN FIGURE 2).
- 4\THE MOTORIZED FLOOR BRUSH IS EQUIPPED WITH A SELF-PROTECTION FUNCTION. IF THE BRUSH CANNOT ROTATE FREELY (E.G., DUE TO BLOCKAGE), IT WILL AUTOMATICALLY CUT OFF

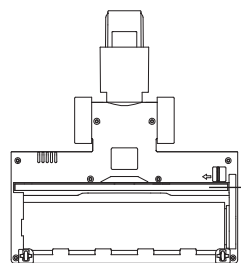


FIGURE 1

DUST  
SCRAPING BLADE

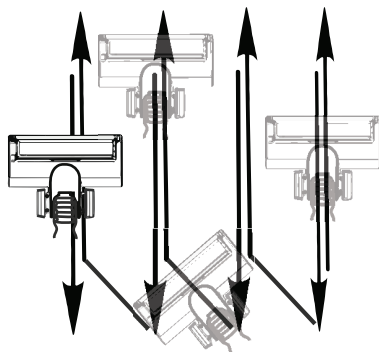


FIGURE 2

## HOW TO USE THE NOZZLE:



SUITABLE FOR  
NARROW SPACES



SUITABLE FOR UNEVEN SURFACES  
SUCH AS CLEANING KEYBOARDS AND BOOKS

## IMPORTANT NOTE:

- 1\STAND UPRIGHT AND ENSURE BOTH ARMS ARE NATURALLY BENT, RELAXING THE SHOULDERS AND ARMS.
- 2\USE A PENDULUM-LIKE MOTION TO SWING YOUR ARMS BACK AND FORTH WHILE GENTLY ROTATING THE HANDLE TO CHANGE DIRECTION (AS SHOWN IN FIGURE 1).
- 3\IF YOU NEED TO CHANGE THE CLEANING DIRECTION (E.G., VACUUMING BETWEEN CHAIRS), MOVE YOUR LEGS AND BODY TO CHANGE DIRECTION, KEEPING YOUR BODY ALWAYS PERPENDICULAR TO THE CORDLESS VACUUM CLEANER.
- 4\AVOID EXCESSIVE WRIST TWISTING OR LIFTING SHOULDERS/ARMS AT UNUSUAL ANGLES. THIS MAY RESULT IN MUSCLE/JOINT INJURIES.



FIGURE 1

## USAGE INSTRUCTIONS

TO ENSURE THE BEST VACUUMING EFFICIENCY, IT IS RECOMMENDED TO CLEAN THE DUSTBIN AFTER EACH USE. FOR LONG-TERM MAINTENANCE OF THE FILTER, REPLACE THE HEPA FILTER EVERY YEAR OR WHEN THE AIRFLOW IS STILL WEAK EVEN AFTER CLEANING THE VACUUM.

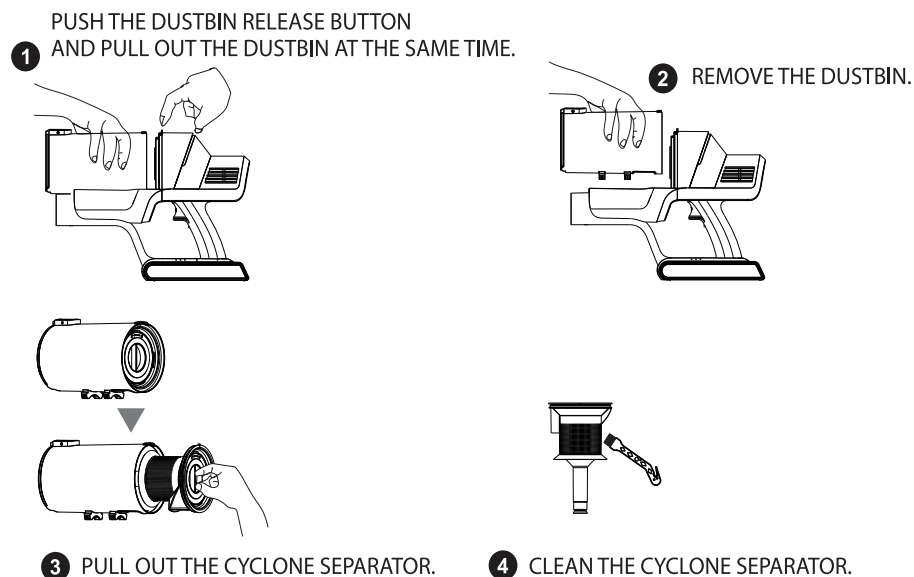
### HOW TO CLEAN THE DUSTBIN

CLEANING FREQUENCY: AFTER EACH USE.



### HOW TO CLEAN THE CYCLONE SEPARATOR.

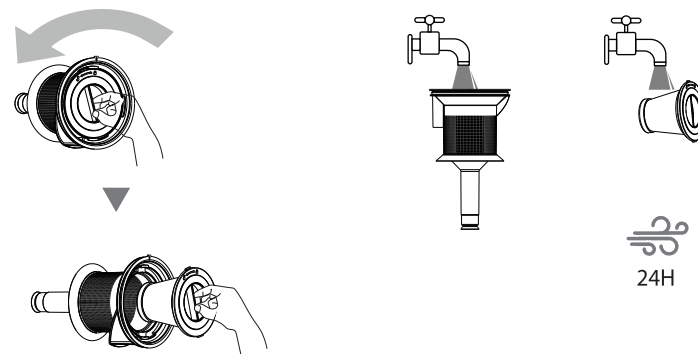
CLEANING FREQUENCY: AS NEEDED



## USAGE INSTRUCTIONS

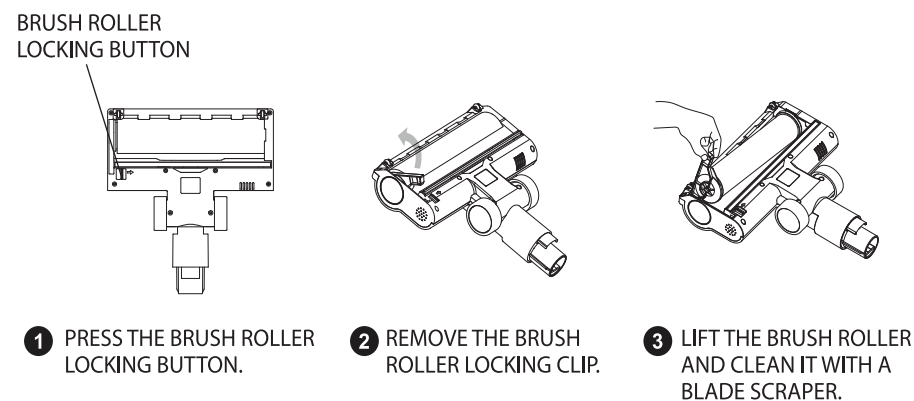
### HOW TO CLEAN THE HEPA FILTER.

CLEANING FREQUENCY: RECOMMENDED EVERY THREE TO SIX MONTHS OR WHEN THE AIRFLOW IS WEAK. IT IS ADVISED TO REPLACE THE HEPA FILTER AFTER ONE YEAR.



WARNING: DO NOT CLEAN ANY PARTS OF THE VACUUM CLEANER OTHER THAN THE FILTER UNIT. DO NOT USE THE MACHINE WITHOUT INSTALLING THE CYCLONE CONE AND HEPA FILTER. OTHERWISE, DAMAGE INCURRED WILL NOT BE COVERED BY WARRANTY.

### HOW TO CLEAN THE FLOOR BRUSH.



## TECHNICAL SPECIFICATIONS

MAIN UNIT SPECIFICATIONS: 160W, 22.2V

LI-ION BATTERY SPECIFICATIONS: 2200MAH

CHARGER INPUT: 100-240VAC 50/60HZ

CHARGER OUTPUT: 27VDC 500MA

CHARGING TIME: 3.5-5 HOURS

USAGE TIME: 35-40 MINUTES (ECO MODE); 15-18 MINUTES (MAX MODE)

PRODUCT DIMENSIONS: 240MM (WIDTH) X 230MM (DEPTH) X 1110MM (HEIGHT)

NET WEIGHT: 1.4KG (MAIN UNIT)

NOTE: CHARGING AND OPERATING TIMES DEPEND ON THE SURROUNDING TEMPERATURE. THE PROTECTIVE MECHANISM WILL ACTIVATE IN CASE OF EXCESSIVELY HIGH OR LOW TEMPERATURES TO SAFEGUARD THE MOTOR AND BATTERY.

## TROUBLESHOOTING AND ANALYSIS

COMMON FAULTS:	POSSIBLE CAUSES	SOLUTIONS
THE MACHINE IS NOT WORKING.	INSUFFICIENT BATTERY POWER	FULLY CHARGE THE DEVICE BEFORE USE.
	HIGH TEMPERATURE	PLACE THE MACHINE IN A COOL AREA FOR COOLING BEFORE USE.
THE BATTERY CANNOT CHARGE.	MISMATCHED POWER ADAPTER	ENSURE THE USE OF THE ORIGINAL 27VDC ADAPTER.
	HIGH TEMPERATURE	ALLOW THE MACHINE TO COOL IN A COOL AREA BEFORE RECHARGING.
WEAK SUCTION.	FILTER CLOGGED WITH FINE DUST	REGULARLY CLEAN THE FILTER.
	OBSTRUCTION OR BLOCKAGE IN THE PIPELINE	CLEAN THE PIPELINE AND REMOVE FOREIGN OBJECTS.
UNUSUAL NOISE DURING MOTOR OPERATION	BLOCKAGE IN THE SUCTION INLET OR FILTER	CLEAR ANY BLOCKAGES AT THE BRUSH INLET, CONDUCTIVE TUBE, AND WITHIN THE FLOOR BRUSH, AND CLEAN THE FILTER.
THE FLOOR BRUSH IS NOT ROTATING.	JAMMED BY FOREIGN OBJECTS	REMOVE ANY FOREIGN OBJECTS CAUSING THE FLOOR BRUSH TO BE OBSTRUCTED.

### Please Note

A new unit may become hot with a slight plastic odor after running the motor at high speed for several minutes. This is normal and would disappear gradually.

# Warranty

---

## **1 YEAR LIMITED WARRANTY**

The warranty covers manufacturing and material defects or workmanship for a period of 1 year from the day of purchase.

### **• What's not covered?**

- 1) Damaged caused by misuse, abuse, neglect, alternation, unauthorized repair.
- 2) Battery discharge time shrinks due to ageing over-use.
- 3) Natural depreciation.